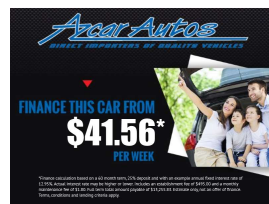


# 2006 Mazda MPV 23T TURBO \*LOW KMS\*



## VEHICLE INFORMATION

### Cash Price

Includes GST

**\$9,450**

+ on-road-costs of \$350

Finance this vehicle from only

**\$41.56**

per week\*

Total Amount Payable

**\$13,255.83**

finance  
**NOW** Money your way



Gain peace of mind with Mechanical Breakdown Insurance. Ask us how.

### Body

5 door, People Mover

### Odometer

89,301 km

### Engine

2300 cc

### Fuel Type

Petrol

### Transmission

Tiptronic

### Wheels

18", Factory Alloys

### VIN

-

### Reg No.

-

### Ext Colour

Wine

### History

-

### Seats

8 seats, Cloth

### Interior

Black

### Audio

CD Player

### Stock ID

2599

### Exterior Features

- » Alloy wheels
- » Body Kit (Factory)
- » Central locking
- » Electric Mirrors (Retractable)
- » Electric Sliding Doors
- » Electric Windows
- » Fog Lights
- » Rear Wiper
- » Spoiler

### Interior Features

- » Air Conditioning
- » CD PLAYER
- » Central Locking
- » Child seat anchor points
- » Climate Control
- » Digital Display
- » Driver airbag
- » Dual Zone A/C
- » Front Parking Camera
- » Passenger airbag
- » Reverse Camera

### Mechanical Features

- » 4 cylinder
- » ABS brakes
- » Camchain Engine
- » Power steering
- » Stability Control
- » Turbo



Azcar Autos, Phone 09 576 2223, Email sales@azcarautos.co.nz  
36a Ben Lomond Cres, Pakuranga, Auckland 2010, New Zealand  
www.azcarautos.co.nz

\* Finance calculation based on a 60 month term, 25% deposit and with an example annual fixed interest rate of 12.95%. Actual interest rate may be higher or lower. Includes an establishment fee of \$495.00 and a monthly maintenance fee of \$1.80. Full term total amount payable of \$13,255.83. Estimate only, not an offer of finance. Terms, conditions and lending criteria apply.