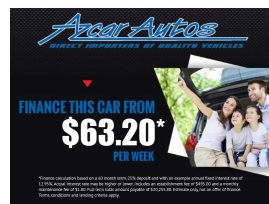


# 2009 Toyota HIACE



## VEHICLE INFORMATION

### Cash Price

Includes GST

**\$14,950**

+ on-road-costs of \$350

Finance this vehicle  
from only

**\$63.20**

per week\*

Total Amount Payable

**\$20,255.88**

finance  
**NOW** Money your way



Gain peace of mind  
with Mechanical  
Breakdown Insurance.  
Ask us how.

### Body

4 door, Van

### Odometer

127,037 km

### Engine

2000 cc

### Fuel Type

Petrol

### Transmission

Automatic

### Wheels

-

### VIN

-

### Reg No.

-

### Ext Colour

White

### History

-

### Seats

3 seats

### Interior

Grey

### Audio

-

### Stock ID

2777

### Exterior Features

- » Central locking

### Interior Features

- » Air Conditioning
- » Central Locking
- » Driver airbag

### Mechanical Features

- » 4 cylinder
- » ABS brakes
- » Camchain Engine
- » Power steering



Azcara Autos, Phone 09 576 2223, Email sales@azcarautos.co.nz  
36a Ben Lomond Cres, Pakuranga, Auckland 2010, New Zealand  
www.azcarautos.co.nz

\* Finance calculation based on a 60 month term, 25% deposit and with an example annual fixed interest rate of 12.95%. Actual interest rate may be higher or lower. Includes an establishment fee of \$495.00 and a monthly maintenance fee of \$1.80. Full term total amount payable of \$20,255.88. Estimate only, not an offer of finance. Terms, conditions and lending criteria apply.